

TOUCHING LIVES **MOULDING FUTURE**

FOCUS ON LEARNING



PROSPECTUS

ST. FRANCIS DE SALES SCHOOL

CBSE AFFILIATION NO.: 230076

A CO - EDUCATIONAL MISSIONARY SCHOOL UNDER CBSE FROM CLASS PRE SCHOOL - XII



DOOR TO YOUR DREAMS



TABLE OF CONTENTS

SL. NO.	PARTICULARS	PAGE NO.
01	AWARDS AND ACHIEVEMENTS	02
02	MISSION & VISION	03
03	ABOUT SFS	06
04	MESSAGE FROM THE PRINCIPAL'S DESK	07
05	CURRICULAR AND PEDAGOGICAL STRUCTURE	08
06	FOCUS ON LEARNING OUTCOMES, COMPETENCIES, AND SUBJECT-INTEGRATION	08
07	SFS SAFE SCHOLARSHIP PROGRAMME	9 - 13
08	DISCOVER OUR CAMPUS AND FACILITIES	14
09	CO-CURRICULAR ACTIVITIES	15
10	WHAT MAKES SFS HIGHER SECONDARY DIFFERENT AND UNIQUE?	16 - 17
11	INTEGRATED SCIENCE AS AT SFS	18
12	SCIENCE STREAM AT SFS	19
13	HUMANITIES STREAM AT SFS	20
14	COMMERCE STREAM AT SFS	20
15	OUR HUMAN RESOURCE	21
16	FEW FEATURES OUT OF MANY MORE	21
17	EVENTS HELD AT SFS GUWAHATI	22
18	LIFE @ SFS	23
19	SOCIAL MEDIA	24

AWARD & ACHIEVEMENTS



- ▶ **'Certificate of Excellence' by 'Bharat Shiksha Puraskar 2021':** One of the Highest National Recognition in the field of Education, achieved for 'Outstanding contribution to Indian education'. Winner across 500 nominations in India.
- ▶ **RANKED NO. 24** across India in the field of **'Mental Health'**. 'Mental Health Wellbeing' – a PAN India survey by 'Reimagine Inc'. Achieved for 'Excellence in prioritizing wellbeing of stakeholders'.
- ▶ Achieved the **"Best School Promoting Cultural Activities"** in the **"National School Awards (NSA-2022)"** among estimated 4500 schools that participated – a PAN India body that awards and recognizes for great service in the field of education.
- ▶ **National School Award 2023**, SFS Guwahati was awarded the **"Best School of the Year Award"** for providing excellent contributions in the field of education throughout the years. In the 4th edition of Education Excellence Awards 2023 by the Kiteskraft Production. The Kiteskraft Productions is known for organizing National and International Conferences and Award Ceremony across the country.

#1 ONE OF THE BEST SCHOOL IN ASSAM



INSPIRING TO TRANSFORM



AN INSTITUTION OF EXCELLENCE
IMPARTING HOLISTIC EDUCATION TO ITS
HUMAN RESOURCE TO MOULD THEM INTO
GLOBALLY COMPETENT, ENVIRONMENTALLY
SENSITIVE AND SCIENTIFICALLY TEMPERED
CITIZENS WITH THE FRANSALIAN VALUE OF
UNIVERSAL BROTHERHOOD.

VISION



TO NURTURE AN ENGAGING
ENVIRONMENT THROUGH A
PROGRESSIVE CURRICULUM,
JOYFUL AND EXPERIENTIAL
LEARNING, CARE FOR THE
ENVIRONMENT AND RESPECT
FOR EVERY BEING TO
PROMOTE UNIVERSAL
WELL-BEING.

MISSION



**EDUCATION IS THE FOUNDATION UPON
WHICH WE BUILD OUR FUTURE.**



**IN THE GARDEN OF LEARNING, CURIOSITY IS
THE SEED THAT BLOOMS INTO WISDOM**





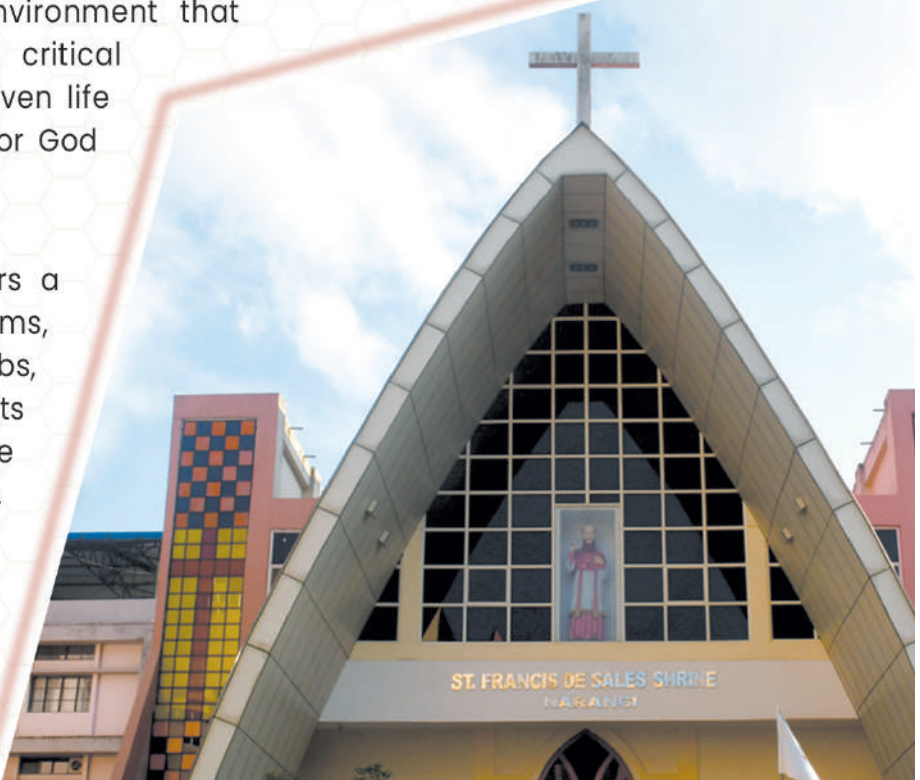
ABOUT SFS

We proudly celebrate a remarkable journey of education and excellence – our school's Silver Jubilee Year! For the past 25 years, we have nurtured young minds, fostered innovation, and upheld a tradition of academic brilliance. This significant milestone is a testament to our commitment to shaping future leaders and providing a holistic learning experience. As we reflect on our achievements and milestones, we look forward to a future filled with even greater accomplishments and a continued dedication to empowering generations to come. Come be a part of our legacy as we embark on the next chapter of educational excellence and innovation."

SFS School, established on January 24, 1998, has emerged as a distinguished leader in North East India, offering top-quality education, fostering a nurturing environment, and promoting holistic development among young individuals. The school is dedicated to helping students realize their true potential, emphasizing the cultivation of versatile personalities, academic excellence, and career skills by providing a secure and safe future. SFS School ensures that students have abundant opportunities to flourish in all aspects of life, building a strong foundation deeply rooted in SFS.

Our exceptional curriculum, highly qualified teachers, and talented students are devoted to establishing a legacy of trust and confidence. We provide a nurturing educational environment that fosters a healthy scientific temper, critical thinking, essential learning, value-driven life skills, and a profound appreciation for God and humanity.

SFS School in North East India offers a well-designed library, reading rooms, playground, conference hall, labs, multimedia and dance rooms, sports facilities, canteens, and a secure campus. It provides holistic, child-friendly, and value-based education, making it a top Notch secondary school in the region.



MESSAGE FROM THE PRINCIPAL'S DESK

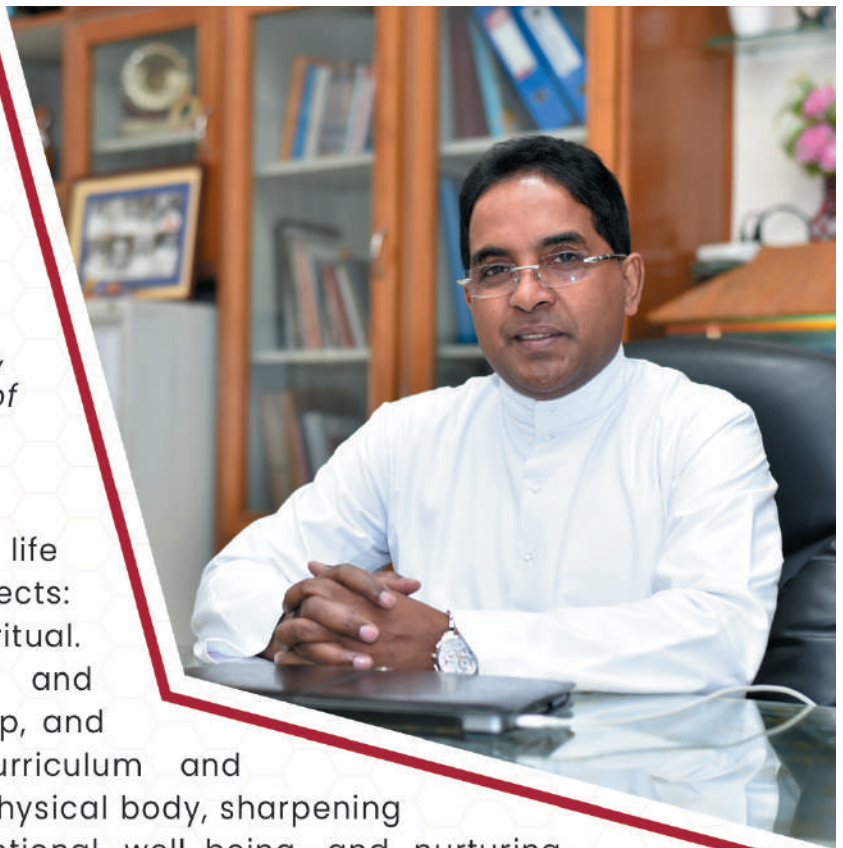
Touching lives and Moulding future – this is our dream, aspiration, heartbeat, and deep down longing of the heart.

At SFS, we recognize that human life encompasses four essential aspects: physical, mental, emotional, and spiritual. To achieve balance, fulfilment, and wholeness, we strive to heal, develop, and integrate these aspects. Our curriculum and approach emphasize nurturing the physical body, sharpening intellectual faculties, fostering emotional well-being, and nurturing spiritual growth. We believe that by addressing all these dimensions, we can help students to lead a healthy, satisfying, and balanced life. It is our commitment and passion to cultivate the totality of each child, ensuring that they become complete individuals who are equipped to navigate life's challenges and find deeper meaning and purpose.

As you are our valued, respectful, and potential parent partners, we look forward to your support and collaboration. With your involvement, our institution will thrive in identifying and nurturing outstanding students from various backgrounds. If you have any questions or need further clarification, please feel free to reach out to us.

MAY YOU AND YOUR CHILD BE BLESSED.

**FR. GEORGE THOMAS, MSFS
PRINCIPAL**



CURRICULAR AND PEDAGOGICAL STRUCTURE

SL. NO.	STAGES	CLASSES	AGE CRITERIA	PEDAGOGICAL APPROACH
1	Foundational Stage	Classes Pre-School to II	3–8yrs	Multilevel, play and activity-based learning.
2	Preparatory Stage	Classes III to V	8–11yrs	Play, discovery, activity-based and interactive classroom learning.
3	Middle School	Classes VI to VIII	11–14yrs	Experiential learning in sciences, mathematics, arts, social sciences, and humanities.
4	Secondary Stage	Classes IX to XII	14–18yrs	Multidisciplinary curriculum, greater critical thinking, flexibility and student choice of subjects.

FOCUS ON LEARNING OUTCOMES, COMPETENCIES, AND SUBJECT-INTEGRATION

Learning Outcomes: At SFS, we are dedicated to fostering holistic development and empowering students to become lifelong learners, well-equipped to thrive in an ever-changing world. Our educational philosophy revolves around three core pillars: Learning Outcomes, Competencies, and Subject Integration. We believe that a well-rounded education encompasses not only academic excellence but also the development of essential life skills and a deep understanding of the world around us.

Competencies: In addition to learning outcomes, we emphasize the development of competencies that empower our students to excel in various domains. These competencies are interwoven into every aspect of our curriculum and co-curricular activities.

Subject Integration: We recognize the inter connectedness of subjects and their real-world applications. Our curriculum is designed to integrate subjects whenever possible, allowing students to see the relevance of their learning and apply their knowledge in meaningful ways. This approach cultivates a deeper understanding of concepts and enhances students' ability to connect ideas across disciplines.

We are committed to nurturing well-rounded individuals who possess the knowledge, skills, and mindset to excel in an evolving world. Our focus on learning outcomes, competencies, and subject integration ensures that our students are not only academically strong but also equipped to lead purposeful lives, contribute to society, and embrace lifelong learning.

SFS SAFE SCHOLARSHIP PROGRAMME

SFS School is committed to serve the society at large and a preferential care shall be ensured for students with exceptional talents in scholastic and co-scholastic areas. The school is also steadfast in its service to the economically weaker section of the society. Keeping the welfare of its employees the organization feels obliged to support the wards of its employees. The Scholarship programme of the school is called SAFE (Student Accompaniment for Financial Empowerment). Safe is based on three categories.

1. TALENT NURTURING SCHOLARSHIP

2. FINANCIAL EMPOWERMENT SCHOLARSHIP

3. EMPLOYEE SUPPORT SCHOLARSHIP

01 TALENT NURTURING SCHOLARSHIP

CLASS XI



- ▶ Students who get National Rank (Top 10) in Class X will be given a cash award of Rs. one lakh only.
- ▶ Applications for Scholarships by eligible candidates must be submitted to the school.
- ▶ School Topper (SFS Guwahati only) in Class X Board Examination (must score above 95%) shall be given a 100% Admission Fee as a scholarship in Class XI. To continue with the Scholarship in Class XII, the student must score at least 90% mark in Class XI Final Examination. He / She shall be given a 50% waiver in Annual & Tuition fees.
- ▶ Class X students who score 95% and above shall be given a 50% Admission Fee as a scholarship in Class XI only. (Applicable to students of any school or board)
- ▶ Class X students who score above 90% shall be given a 25% Admission Fee as a scholarship in class XI. (Applicable to students of any school or board)



CLASS XII

- ▶ Students who get National Rank (Top 10) in Class XII shall be given a cash award of Rs. 1.5 lakhs only.
- ▶ SFS Guwahati School Topper in Class XII CBSE Board Examination (Must score above 95%) shall be given Rs. 25000 (Twenty-five thousand only) as a scholarship for future studies.
- ▶ stream Topper in Class XII CBSE Board Examination (Must score above 95%) shall be given Rs. 10000 (Ten thousand only) each as a scholarship for their future studies. If the stream topper scores between 90% - 94%, they shall be given Rs. 5000 (Five thousand only) each for their future studies.
- ▶ Students availing of the School Topper Scholarship shall not be eligible for the stream topper Scholarship.



CLASSES I - IX

EVALUATION OF TALENT NURTURING SCHOLARSHIP WILL BE ON THE FOLLOWING CRITERIA:

**20% FROM TERM 1
EXAMINATION**

**20% FROM TERM 2
EXAMINATION**

**60% FROM DESALITE
OLYMPIAD**

- ▶ Class Topper (Topper among all the sections) in the school in the Talent Nurturing Scholarship shall be given Rs. 8000 as Scholarship in Tuition Fee. (Must score above 95%)
- ▶ The Top 3 Toppers from each section in the school in the Talent Nurturing Scholarship shall be given the following scholarship in Tuition Fee. (Must score at least above 90%)

RANK 1 – Rs. 7000

RANK 2 – Rs. 6,000

RANK 3 – Rs. 5,000

- ▶ Students availing the Class Topper Scholarship shall not be eligible for Section Topper Scholarship.



TALENT NURTURING CO-SCHOLASTIC SCHOLARSHIP

ELIGIBILITY CRITERIA

- ▶ The scholarships shall be given to those who performed in recognized competitions held in a previous calendar year.
- ▶ The scholarship awarded under the scheme shall be for one year only, provided the awardees pass the annual examination with at least 60% marks in Term I & II examination.
- ▶ The value of each Talent Nurturing Co-Scholastic Scholarship shall be as follows:
Winner – Rs. 8000 Runner up – Rs. 6000 1st Runner up – Rs. 5000
- ▶ The first / second / third position holders in individual events organized by any recognized Sports Federation by the Government & statutory bodies shall be eligible for the Talent Nurturing Co-Scholastic Scholarship Programme
- ▶ The school shall certify the correctness of the contents of the application filled in by the candidate.
- ▶ The scholarship shall be applicable to the below mentioned disciplines: Priority Disciplines – Archery, Athletics, Badminton, Basketball, Boxing, Cycling, Football, Gymnastics, Handball, Hockey, Judo, Kabaddi, Kho-Kho, Tennis, Shooting, Swimming, Table Tennis, Volleyball, Weightlifting and Wrestling, Ball Badminton, Baseball, Billiards & Snookers, Bowling, Carrom , Chess, Cricket, Fencing, Golf, Karate, Power lifting, Rowing, Softball, Squash, Wushu , Taekwondo.
- ▶ **Selection Process:** There shall be a duly constituted Selection Committee to scrutinize the applications and select candidates for these scholarships on the basis of performance and merit. The decision of the Committee will be final and binding, and no correspondence in this regard shall be entertained.



SFS School is committed to serving society and preferential care for the economically weaker sections. The school shall give SAFE assistance to a minimum of 50 students in a year based on the following criteria.

- ▶ Safe assistance will be applied to the school in the prescribed form available at the school office with all the required documents. The decision shall be taken on a first-come, first-serve basis.
- ▶ The assistance is for one year only. However, it may be renewed on re-application, subject to the satisfaction of the school management.
- ▶ Financial assistance is subject to the decision of the school management and its policies from time to time.
- ▶ The school management has the right to cancel or modify the assistance without stating any reason what so ever.
- ▶ Scholarship refers to relaxation in Annual fees and Tuition fees only.
- ▶ The scholarship shall vary from 15% to 100%, subject to the decision of the school management.
- ▶ The scholarship committee shall study and verify the documents. If required, the committee shall call the applicants for queries, clarification, or an interview before taking the final decision.
- ▶ Family Annual Income of both parents together should not exceed more than 2 Lakhs per annum.
- ▶ Parents seeking concession must have a Ration Card or BPL Card and need to be submitted to the scholarship committee.
- ▶ The student must score at least an aggregate of 65% marks each in both Term 1 & Term 2 examinations. If the student has exceptional co-curricular achievement in the District / State / National / International Level, 60 % marks will suffice.
- ▶ Parents with four or more children in the school will get a concession only for the first child. Also, he or she should qualify for the No. 8, No. 9 & No. 10 criteria.



SFS Guwahati has introduced a scholarship program to assist the children of employees who plan to continue their education at SFS School. Keeping the welfare of its employees, the organization feels obliged to support the wards of its employees.

THE FOLLOWING ARE THE POLICIES FOR EMPLOYEE SUPPORT SCHOLARSHIP:

- ▶ Employment in the school is not a guarantee for the admission of their ward.
- ▶ The admission shall depend upon the availability of seats and merit only. Also, the student should clear the interaction / baseline assessment (as applicable).
- ▶ The support scholarship is applicable for one year only. However, it may be renewed on reapplication, subject to the satisfaction of the school management.
- ▶ An employee shall be provided with the scholarship with a 50% waiver in new admission fees & annual fee cum quarterly fees.
- ▶ The scholarship for Support Staff shall vary from 5% to 100%, subject to the decision of the school management.



ELEVATING EDUCATION THROUGH EXCEPTIONAL INFRASTRUCTURE: **DISCOVER OUR CAMPUS FACILITIES**

INFRASTRUCTURE: Well Equipped Labs, Workshops, Language Lab, ABACUS Classes.

MEDICAL FACILITIES: Project Child Health Care checkup done periodically, Nurse and all- time ready ambulance service available at school premises.

CANTEEN: Hygienic and well- maintained canteen.

BUS FACILITIES: Fleet of buses with extensive routes.

SPORTS: Wide range of options to suit your interest.

SECURITY PROTOCOLS: Patrolling done by well-trained security guards 24*7; Fire Alarm; CCTV Cameras, Authorization check- ins / outs.

LIBRARY



The library at SFS Guwahati

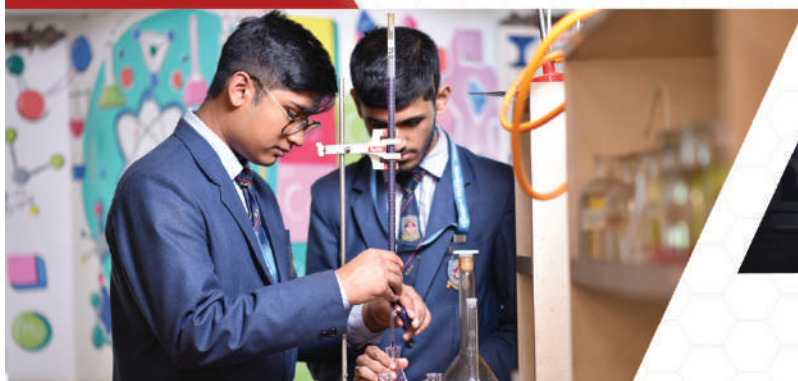
is one of the best places for a learner to be in. Well-furnished and designed to the taste, it is an inviting place not only for students but also for every educator and learner. The library has been well stocked with books of all sorts including best sellers, an e-library facility, and also a large number of periodicals and magazines. Collection of more than 10,000 books with a digital platform supporting e-books as well. The school is committed to ongoing investment in print books and digital technology such as kindles and other e-book sources and resources. More than just being a place of reading it is a place to do research and in-depth study for students and educators to create a thirst for intellectual pursuit.

It is well known that the environment shapes the personality of a human being. As such, it makes sense that schools, which is where students begin to learn and to engage with their environment and the people around them, is a vital environment. Classrooms at SFS Guwahati have been designed with LCD Projector and are augmented with integrated audio-visual teaching aids for lectures, presentations, etc.

CONDUCTIVE CLASSROOMS



LABORATORIES



CO-CURRICULAR ACTIVITIES

TABLA

ART & CRAFT

BHARAT NATYAM

BIHU DANCE

CHESS

DEBATE

MUN

FINE ARTS

GUITAR

NCC

KSHATRIYA NITYA

OLYMPIAD

QUIZ

BAND

STEM

ATL

VIOLIN

VOCAL SINGING

WELLNESS & YOGA

WESTERN DANCE

BASKETBALL

FOOTBALL

TAEKWONDO

TO BE GUIDED BY TRAINED AND
EXPERIENCED MENTORS

CCA



WHAT MAKES SFS SCHOOL DIFFERENT AND UNIQUE?



- "More options more opportunities." Flexible and student centered optional subjects.
- Highly qualified, competent, and experienced faculties.
- Experimental workshops, knowledge sharing and mentoring programmes by Senior Bureaucrats, Politicians, Artists, Educationists, Journalists, IITians and celebrities from diverse walks of life.
- Exposure to National and International competitions and events.
- Periodic Tests and continuous evaluations aligned to new board and entrance examinations.
- State of art laboratories infrastructure, laboratories, computer lab, libraries and audio - visual rooms.
- Scholarship upto 100% for meritorious students.
- Continuous professional career guidance and career tests.
- High profile MUN (Model United Nations) and debates of National and International profile.
- Leadership and Personality Development grooming sessions.
- Industrial visits and field trips to IIT Guwahati, Science Centre, Assam Secretariat, Media Houses, Tea Auction Centre, TISS and Assam start-up for entrepreneurs, National Law University, Assam Don Bosco University etc.
- Exposure to Photography, 3D printing, Robotics, New Age Technology via Tinkering Lab.
- Perfect mix of scholastic & co-scholastic ambience coupled with regular parents' interaction.



REMEDIAL CLASSES FOR ACADEMIC EXCELLENCE

At SFS School, we are committed to provide a nurturing and inclusive learning environment that supports every student's academic growth. We understand that each student has unique learning needs, and to ensure that no student is left behind, we offer comprehensive remedial classes. These classes are designed to provide targeted support and guidance to students who require additional assistance to reach their full potential.

Our remedial classes are a testament to our commitment to ensuring that every student receives the support they need to excel academically. By offering a personalized approach, subject-specific guidance, and skill enhancement, we empower students to overcome challenges and reach new heights of success. Join us on this journey towards academic excellence and personal growth.



DISCOVER OUR UNIQUE ACADEMIC ENRICHMENT ACTIVITY: PARENTS AS TEACHERS

At SFS School, we believe in the power of a united educational journey, where parents and children embark on a shared adventure of learning. Our "Parents as Teachers" program is a distinctive academic enrichment activity designed to create a stronger bond between families and education.



WHAT IS "PARENTS AS TEACHERS"?

At SFS School, we believe in the power of a united educational journey, where parents and children embark on a shared adventure of learning. Our "Parents as Teachers" program is a distinctive academic enrichment activity designed to create a stronger bond between families and education.

BENEFITS FOR YOUR CHILD:

PERSONALIZED LEARNING: Together with our dedicated teachers, parents tailor learning experiences to match their child's unique needs and learning style.

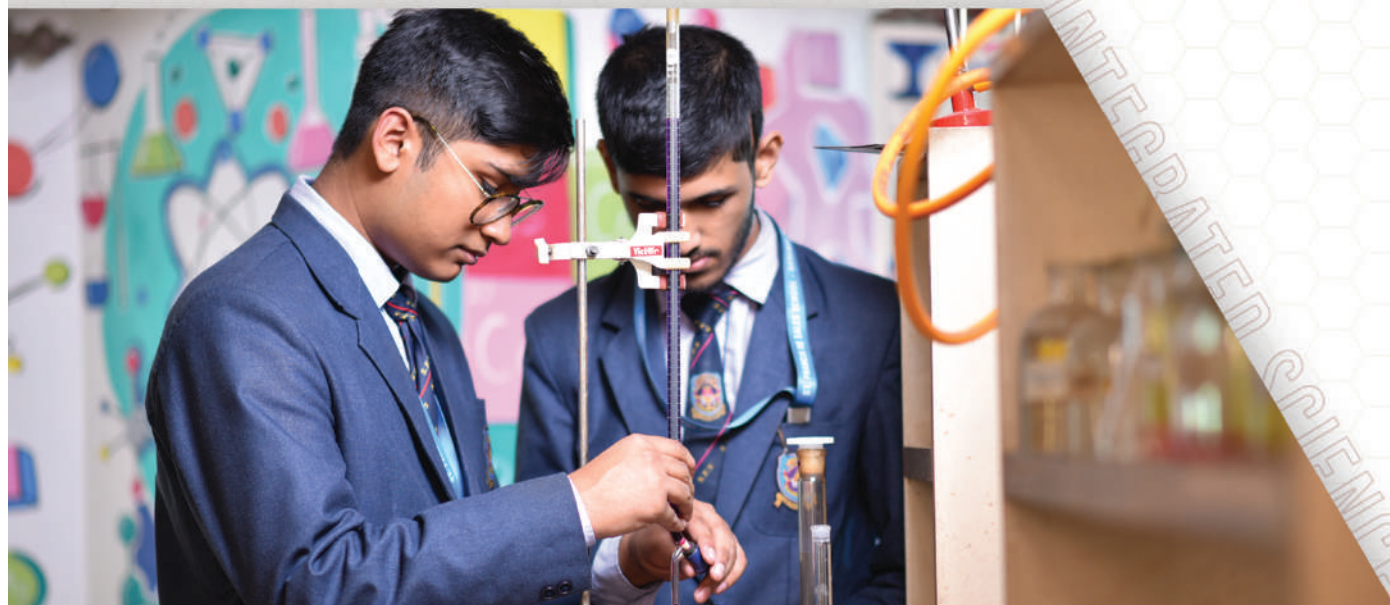
DEEPER ENGAGEMENT: Parents gain insight into their child's academic journey, fostering meaningful conversations and shared educational goals.

LIFE SKILLS: Collaborative learning instills crucial life skills such as communication, teamwork, and problem-solving.

"Parents as Teachers" isn't just an activity; it's a partnership. By actively participating in your child's education, you become an integral part of their academic growth. Together, we create a learning community where each voice is valued and celebrated.

INTEGRATED SCIENCE STREAM AT SFS

"Any budding researcher needs a foundation in several fields to be able to work on the most important problems confronting scientists today..." – David Botstein, former director, Lewis-Sigler Institute for Integrative Genomics.



Integrated Science is a revolutionary introductory science curriculum developed at Princeton, intended for students considering a career in science. By breaking down traditional disciplinary barriers, a year-long course taken in the freshman year provides students with first-rate preparation for a major in any of the core scientific disciplines, and in such a way that helps retain the connections to the other disciplines. The curriculum is founded on the expectation that much of the most important science of the future, though based on the classical disciplines, shall lie in areas that span two or more of them. Integrated Science students get to talk science one-on-one with the best-of-the-best Princeton faculty: the current roster of active teachers includes members of the National Academy of Science and a Nobel laureate. Integrated Sciences is so individualized, it can be tough to imagine concrete career paths right away. Some students choose to study Integrated Sciences because they are hoping to complete pre-requisite coursework for graduate study (physical therapy and public health programs are top choices for graduates of this major), and others might be unsure of the next step but want to follow a more open-ended academic pathway that mirrors their interests. While a combination of Biology, Mathematics, and Physics is common among Integrated Sciences majors, interested students are not necessarily limited to these departments.



SCIENCE STREAM AT SFS

Louis Pasteur once said "Science knows no country, because knowledge belongs to humanity, and is the torch which illuminates the world. Science is the highest personification of the nation because that nation shall remain the first which carries the furthest the works of thought and intelligence."

- ▶ When you study subjects like Physics & Chemistry, it enhances your understanding of the world, causes, effects, etc. It allows you to see and develop scientific knowledge and theory in the world that you come across.
- ▶ Science leads to progressive and remarkable developments. It has helped people to find the cure for so many diseases, raise awareness, and has created infinite possibilities for us.
- ▶ Science teaches you a wide variety of work that you shall never get bored of. From the human body to space and the universe, you will get ample opportunity to learn many things.
- ▶ Science is about discovery and creative thinking. It helps to broaden your understanding and appreciation of the world around you, equips you with excellent problem-solving abilities and a whole host of extremely transferable skills.
- ▶ Science and Mathematics provide students with highly relevant skills that apply to almost any workplace. They offer a flexible foundation enabling students to attain highly respected and well-paid jobs and guarantee them a secure future.
- ▶ Engineering (IITs, NITs, BITS), Medical (AIIMS, MAMC), or Basic Sciences (IISc) there are world-class institutes in India where you can pursue higher education.
- ▶ Science Stream offers you a basket of job opportunities that you can choose from such as; MBBS, BAMS (Ayurvedic), BHMS (Homoeopathy), BDS, Bachelor of Veterinary Science & Animal Husbandry (B.VSc AH), Bachelor of Naturopathy & Yogic Science (BNYS), Bachelor of Physiotherapy, Integrated M.Sc, B.Sc. Nursing, B.Sc. Dairy Technology, B.Sc. Home Science, Bachelor of Pharmacy, Biotechnology, General Nursing, BMLT (Medical Lab Technology), Paramedical Courses, Engineering (B.E/ B.Tech), B.Arch., Integrated M.Sc., Environmental Science, Climate analyst, Research analyst with reference to Physics and Chemistry, etc.



HUMANITIES STREAM AT SFS

- ▶ Being human is more important than just living as a human being. Humanities are found in every nook and corner of the world as much as it is found inside us. Defining humanities stream is a difficult task. However, in few words, it can be described as a subject of human discipline ranging from languages, history, politics, philosophy to psychology and many more. Therefore, Humanities is beyond anything that a person can just imagine.
- ▶ Humanities help us to understand others through their languages, histories, and cultures. Humanities students build skills in writings and critical reading and most importantly encourage us to think creatively in every possible way and raise questions about the world we are living in. Therefore, choosing humanities shall not disappoint you unless and until the choice was yours.
- ▶ Studying Humanities is not so easy as people consider it to be. Students belonging to this stream must have a good memory power and proper hold of the language for writing and speaking. Of late Humanities is considered as the future of the world since creativity and adaptation become the essence of human living. In the 90's if becoming doctors and engineers were the buzz of the time, today becoming explorer, seekers and leaders through Humanities has become the trend.



COMMERCE STREAM AT SFS

- ▶ studying commerce is an opportunity to be part of nation-building. The major areas to explore in the commerce stream are Accountancy, Economics, & Business studies.
- ▶ Commerce is the area of developing and managing a business. The study of commerce develops an individual's analytical and thinking capacity through divergent thinking.
- ▶ Commerce as a stream helps an individual to learn, survive and grow through developing competitive abilities.
- ▶ In today's world there are unlimited job opportunities available for a commerce student - Chartered Accountant, Investment banker, Financial Analysts, Company secretary, Business managers and many more. In short, except Medical and engineering-related, almost all other doors are open for commerce students as a career choice.



OUR HUMAN RESOURCES

The source of strength for an organization is its human resource and at our school, we make sure our employees are all well managed so that they can provide the best of service because happy employees are

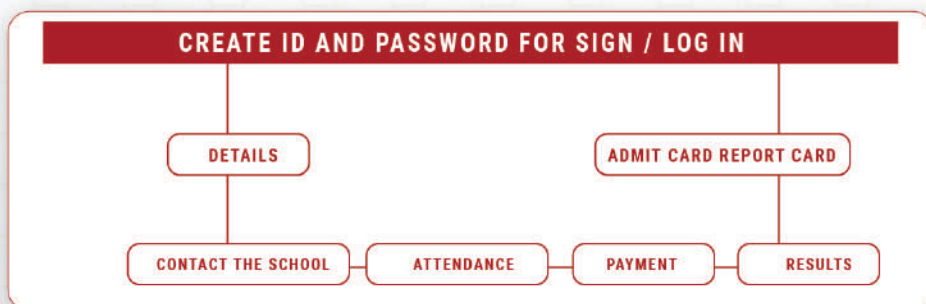
the ones who are completely committed to their work because at the end of the day it's more than just a paycheck – it is the dedication towards their duties and role that makes them passionate about their work which is often reflected in employee engagement.



FEW FEATURES OUT OF MANY MORE

The Desalite Connect application is a complete school ERP software with advanced modules, that help in the smooth functioning of the school activities as it is a useful and smart application that can be easily accessed by the teachers, students, and parents for any database, information or payments related queries as such. The application is available in the google play-store as well as the iOS software for further details

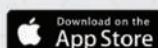
DESALITE CONNECT MOBILE APP



SCHOOL WEBSITE

The school website for school can be accessed wherein the parents can get all the necessary information about the entire school. This website is updated on a daily basis as to meet the changes and provide the most updated version to you all, which would make it easier for you get all the information you need.

www.sfsguwahati.ac.in



EVENTS HELD AT SFS SCHOOL



1. DESALITE FLESTA

2. INTERNATIONAL ONLINE CAROL SINGING COMPETITION

3. INTER SCHOOL DEBATE COMPETITION

4. BIHU COMPETITION

5. SFS CHALLENGERS BASKETBALL TOURNAMENT

6. PARENT'S DAY

7. DESALITE OLYMPIAD

8. BEST TEACHERS AWARD

9. TEACHER'S DAY

10. CHILDREN'S DAY

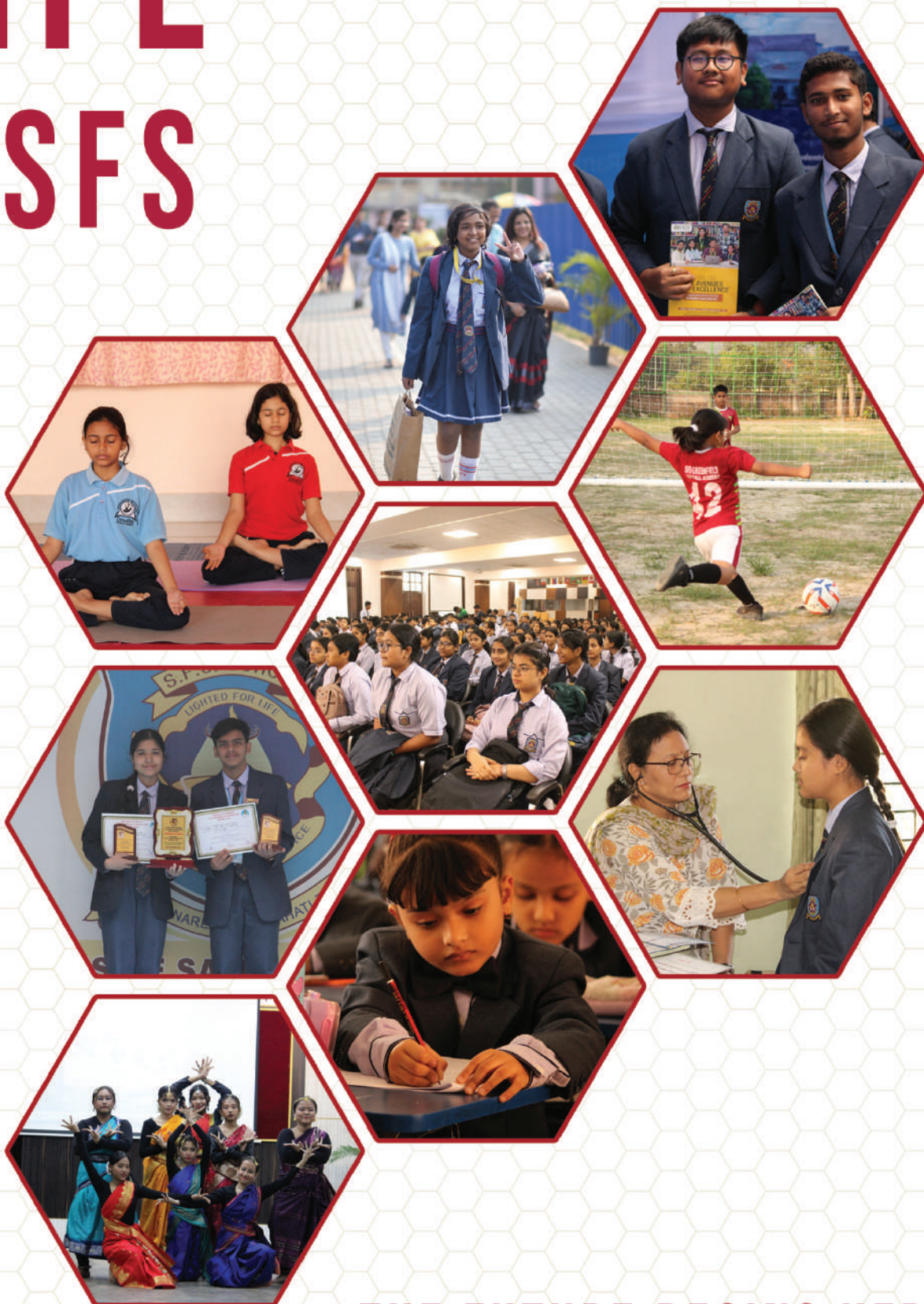
11. YOU ARE AN INSPIRATION

12. INTRA SCHOOL ONLINE COMPETITION OF PARENTS AND STUDENTS

13. SFS MUN



LIFE @SFS



THE FUTURE BEGINS HERE

SOCIAL MEDIA



facebook.com/Sfsguwahati

Like our school Facebook Page and get connected with other students



twitter.com/sfsguwahati

Join the conversation with our official hashtag



instagram.com/sfsguwahati

Have a glimpse of the events held at SFS Guwahati and know more about upcoming events



youtube.com/Sfsguwahati

Take a tour of the life of SFS School and meet the teachers

FOR MORE INFORMATION AND UPDATES, STUDENTS AND PARENTS MAY LOG ON TO:



www.sfsguwahati.ac.in





**ADDRESS: SATGOAN, NARENGI P.O: UDAYAN VIHAR
GUWAHATI, ASSAM-781171**

TOLL FREE NO: 18003453581

RECEPTION NO: +91 7099043177

ADMISSION MOBILE NO: +91 7099043077

EMAIL ID'S:

sfs@sfsguwahati.ac.in

admission@sfsguwahati.ac.in

sfshr@sfsguwahati.ac.in

CONNECT WITH US

OFFICE TIMINGS:

8:30 AM - 4 PM (MONDAY TO FRIDAY)

8:30 AM - 1 PM (SATURDAYS)

CLOSED ON SUNDAYS & HOLIDAYS